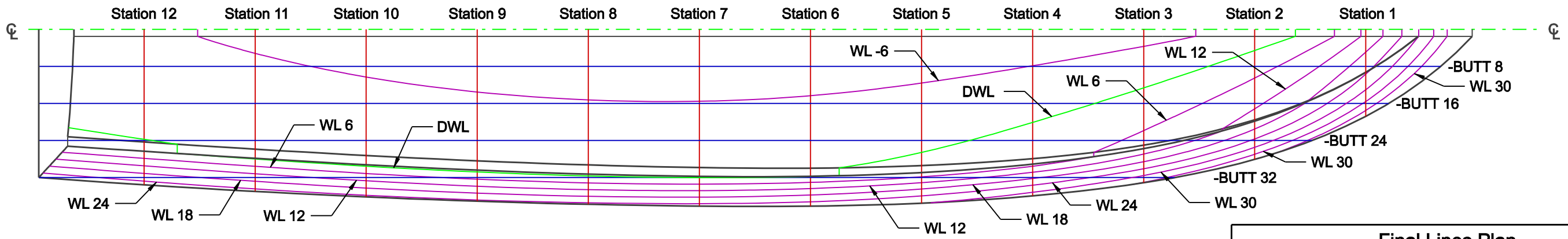
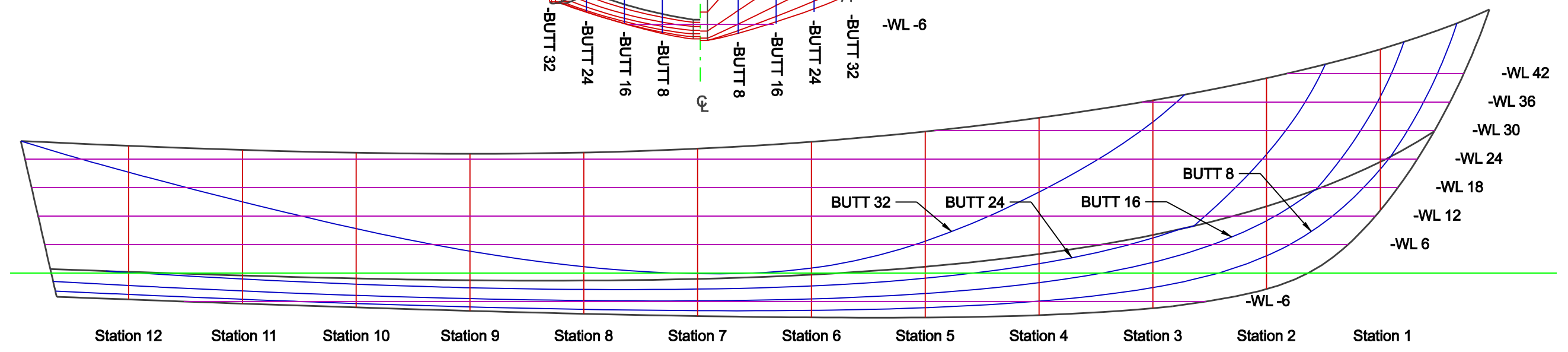
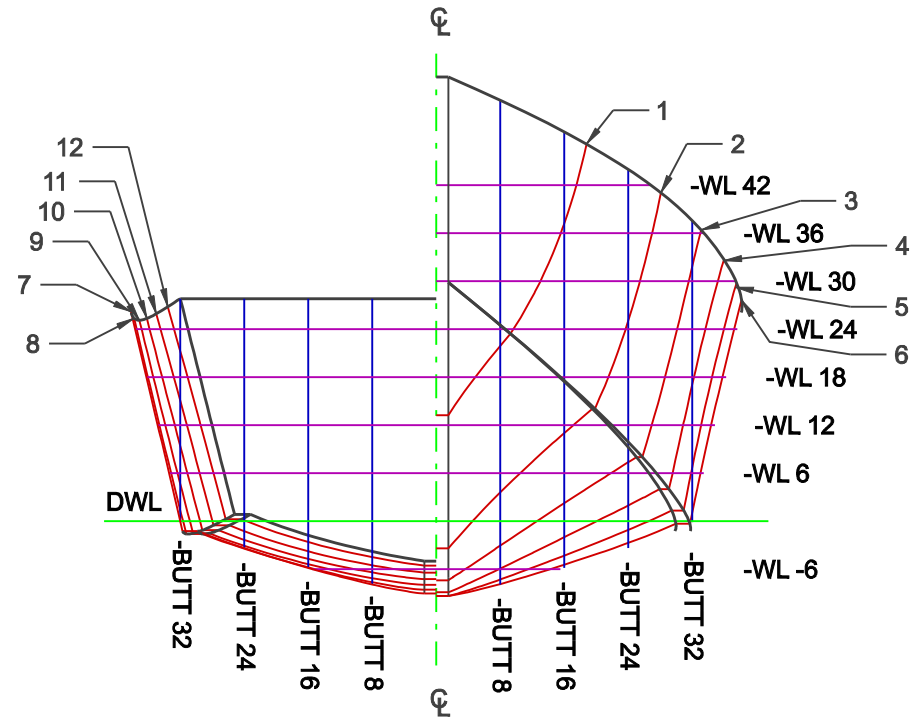


REVISIONS	BY	DATE

**Specifications**  
 Length Overall 25'- 9 3/4"  
 Length on DWL 22'- 0 3/4"  
 Beam (Max.) 6'- 4 1/2"  
 Draft 0'- 9 3/8"  
 Displacement 2,327 Lb.



<b>Final Lines Plan</b>			
<b>26' Fishing Boat for Russell Boat Works</b>			
<b>Oak Hill Marine Design, LLC</b>			
PO Box 1266 Southwest Harbor, Maine 04679 (207) 244-9591			
SCALE	FILE NAME		
1/2 In = 1 Ft	Russell 26 Lines Plan.dgn		
DATE	DRAWN BY	DRAWING NO.	REV.
16 Jan 2004	S. Hudson	A0401-001	0

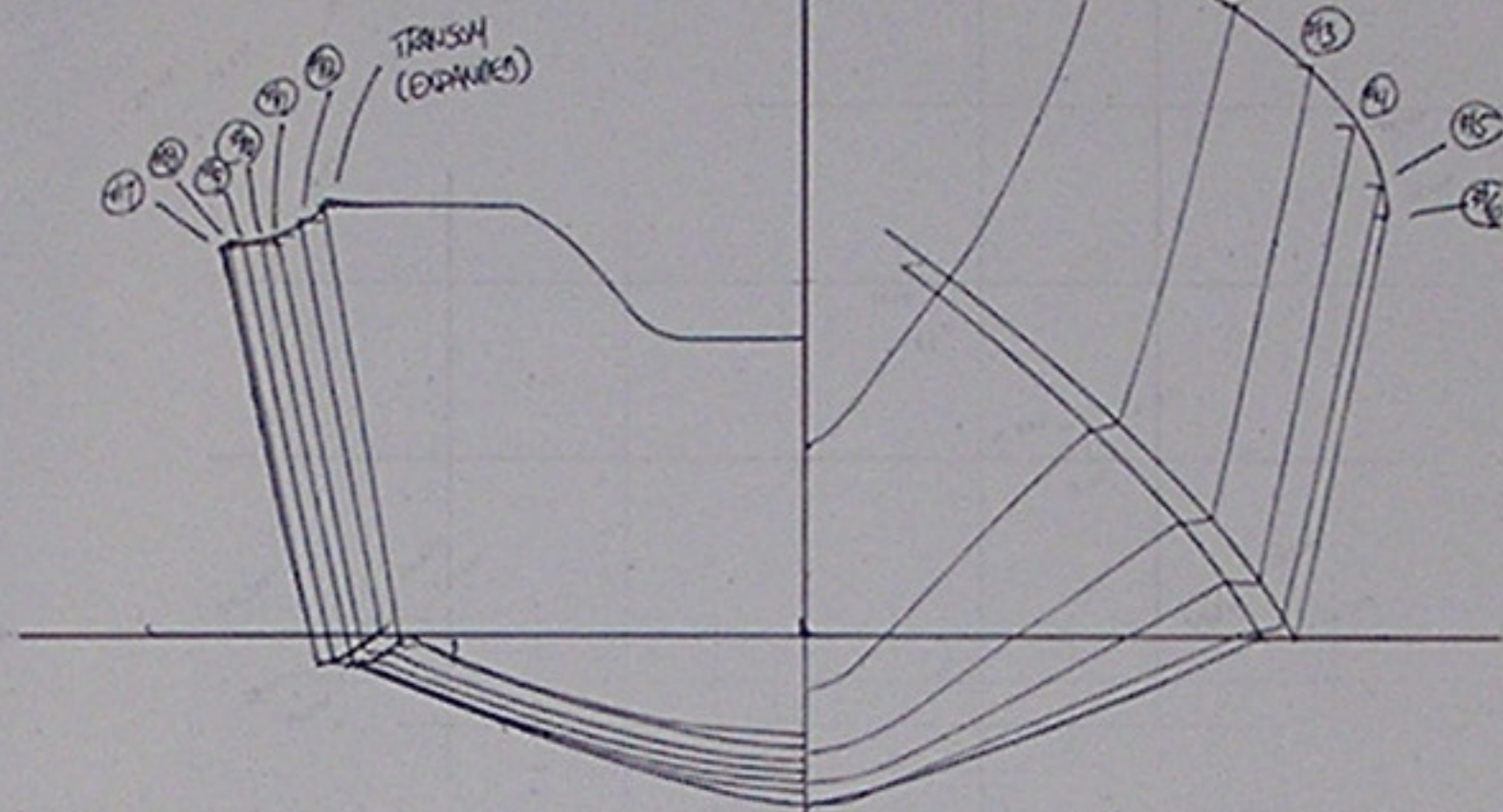
**PROPRIETARY RIGHTS**  
 This document contains information proprietary to Oak Hill Marine Design, LLC. Neither receipt nor possession of it conveys any right to reproduce, disclose, or use in any manner the document, in whole or in part, or any information contained therein, except by written agreement with Oak Hill Marine Design, LLC. In addition, this document may not be altered in any way, by any person or party, without the prior written consent of Oak Hill Marine Design, LLC.



NOV. 15 - 2002

L.O.A. 26'0" BEAM 7'0"  
DRAFT 1/4" 60-100 H.P.

KEVIN RUSSELL-BOAT BUILDER  
P.O. BOX 14 MAIN ROAD  
GREAT CRANBERRY ISLAND  
MAINE 04825  
(207) 244-6757



K.D. RUSSELL

#13

SPRINKLE

#11

#10

#9

#8

#7

#6

#5

#4

#3

#2

SECTION #10

KEVIN RUSSELL-BOAT BUILDER  
P.O. BOX 14 MAIN ROAD  
GREAT CRANBERRY ISLAND  
MAINE 04825  
(207) 244-6757